

MONTHLY MEMBERSHIP PROGRESS REPORT

LOCATION INDIA

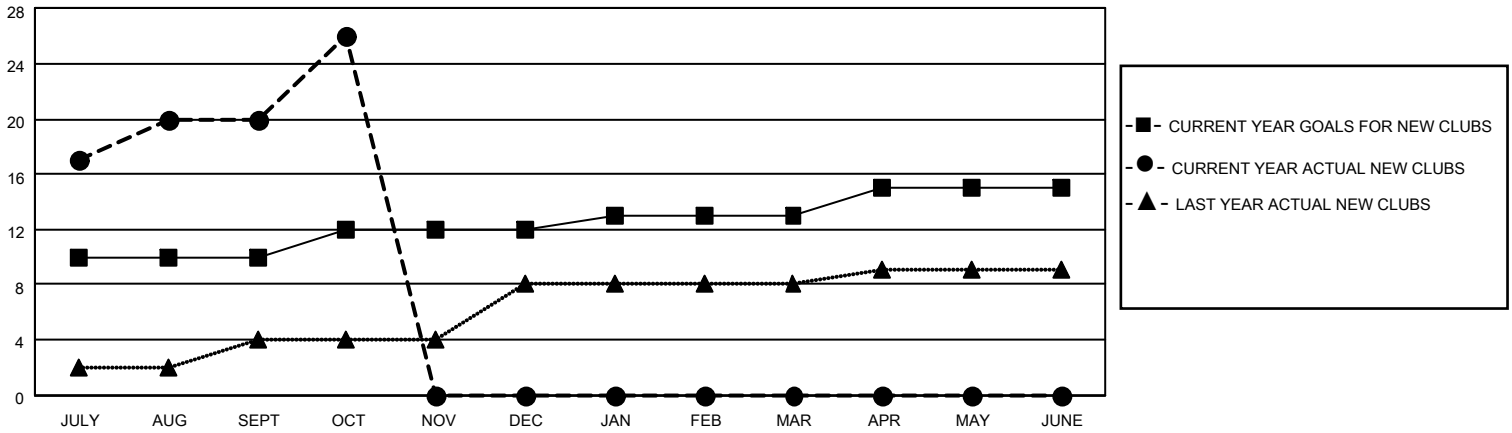
District 320 B

Results as of: 10/31/2021

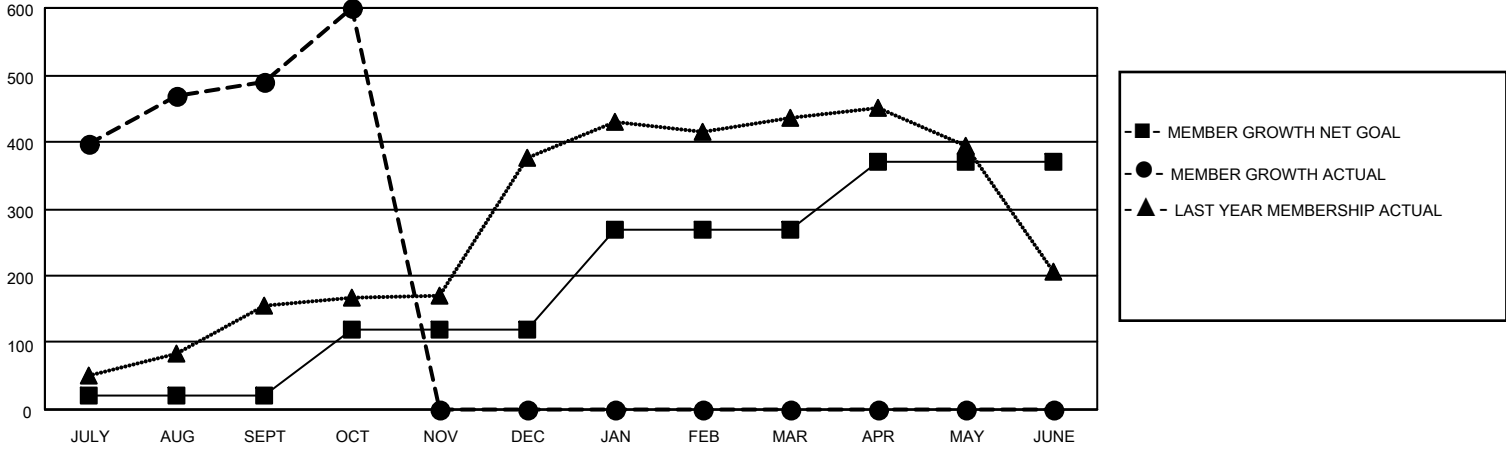
Clubs			
RESULTS FOR 2021-2022			
QUARTER	NEW CLUB GOAL	NEW CLUBS	DROPPED CLUBS
JULY/AUG/SEPT	10	20	2
OCT/NOV/DEC	2	6	0
JAN/FEB/MAR	1	0	0
APR/MAY/JUNE	2	0	0

Members			
RESULTS FOR 2021-2022			
QUARTER	MEMBER GROWTH NET GOAL	MEMBER GROWTH ACTUAL	DROPPED MEMBERS ACTUAL (including transfers)
JULY/AUG/SEPT	20	545	43
OCT/NOV/DEC	100	134	23
JAN/FEB/MAR	150	0	0
APR/MAY/JUNE	100	0	0

GOALS AND ACTUAL NEW CLUBS CUMULATIVE



GOALS AND ACTUAL MEMBERS CUMULATIVE



DROPPED CLUBS: 2

49 CLUBS OF 90 ADDED 1 OR MORE NEW MEMBERS

GENDER DISTRIBUTION

MALE	1,686 (62.72%)
FEMALE	1,002 (37.28%)
NON BINARY	0 (0.00%)
PREFER NOT TO ANSWER	0 (0.00%)

DROPPED MEMBERS

[CLICK HERE FOR CUMULATIVE MEMBERSHIP DATA](#)

DECEASED	5
CLUB CANCELLED	15
OTHER	46
TOTAL	66

TOTAL FAMILY UNIT MEMBERS 1,780

FAMILY MEMBERS PAYING HALF DUES 969